

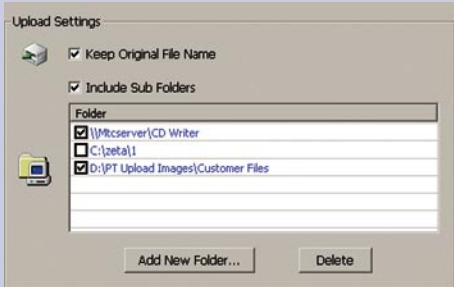


Print Terminal

The new Durst Print Terminal is the ideal editing station for digital image files: powerful, versatile and easy to operate, with seamless integration into any professional lab workflow. JPG, TIF and Bitmap files can be uploaded from any location in your network or from flash media cards - displayed on screen and finally prepared and sent to output devices such as digital Minilabs or Large Format Laser Printers.



Efficient Workflow
Print Terminal reduces correction times to a minimum. Parameters like contrast, saturation, brightness and colour are edited and saved easily by using the Mini-Keyboard. In that way some 600 images (Ø 11,5 MB, 20 x 25 cm (8 x 10 in.)) can be uploaded, efficiently corrected and sent to both a laser printer and CD robot at the same time.



An unlimited number of selectable Upload Channels enable you to upload format independent files from different sources. Print Terminal also features Output Device Channels to send images with the right size and resolution and true colour proofed to multiple devices and folders at the same time.

Boosting Sigmas productivity

In addition, Print Terminal is a Turbo for your Sigma Scanner: connected to the front-end PC of the scanner it boosts the productivity by up to 90 %. Paralleled to the scanner you can correct the RAW scan files on the fly via the keypad on your Print Terminal. That minimises Sigma's idle times drastically, thus enabling maximum productivity.

The field proven software enables soft-proofing with ICC profiles and combines the versatility of professional image editing programs with an easy operation, which results in an outstanding performance.

Print Terminal features advantages you'll hardly find on any other editing station:

- Elimination of time consuming single uploads in other Image Editing Software
- Fast conversion from Megabyte into Print Size and Resolution
- Highest operating comfort and automation through pull down menus for Print Formats, Output Device, Upload channel and others
- Automatic display of preferences, saved in the Upload channel
- True colours thanks to soft proofing with ICC profiles
- Control and overview thanks to Thumbnail display of an order
- Index Prints and Contact Sheets that are customisable at the push of a button
- Load and save function for reference images and colours.
- ASCII-Autospooling for automatic and synchronised workflow when connected to Durst Printers like the Theta 50 / 51
- All current Flash Media readable
- User definable methods of image interpolation

Special advantages for your Sigma/Sigma Plus/Sigma 67 Scanner:

- Increase of productivity up to 90 % by minimising idle times
- Post processing of scanned images parallel to the scanning process
- Contains all functions of the Sigma Software

Technical data and outfit

HP Workstation:

Pentium 4
2,8 GHz
2 Gigabyte RAM
2 Hard Drives (80 + 40 GB)
2 Gigabit Network Cards
CD/RW – DVD Drive

Input File Formats:

Sigma RAW, Jpeg, Bitmap, Tiff

Output File Formats:

RAW, TIFF 8/16 Bit,
TIFF LZW 8/16 Bit,
JPG editable compression, BMP,
PPM



Mini-Keyboard for Colour, Contrast, Saturation and Density Correction



External USB-Card Reader for digital Flash Media: SD-, miniSD-, xD-, Smart Media-, Compact Flash Type I & II, IBM Microdrive, RSMM und Memory Sticks (Select, Pro, Duo, Pro Duo)



CPU Switch for Co-usage of an existing Monitor



durst

**Durst Phototechnik
AG**

Social/Commercial Division

Vittorio-Veneto-Straße 59

I-39042 Brixen, Italy

Telefon +39/0472 81 01 11

Telefax +39/0472 83 09 80

www.durst-online.com

info@durst.it

The latest technical developments are constantly being incorporated into Durst products. Illustrations and descriptions are therefore subject to modification. All rights reserved on images and illustrations.

© Durst Phototechnik AG, 09/2004
IX91025